

2

1. *An Londubh*
The Blackbird

11. *The Banshee*

11. *The Banshee*

2. *Apples In Winter*

12. *Beaumont Rag*

1st Violin

3. *Arthur Darley's Swedish Jig*

13. *Beeswing Hornpipe (A)*

4. *The Bag Of Spuds*

14. *Beeswing Hornpipe Bb*

5. *The Ballydesmond No. 1*

C G Am Em

15. *Behind the Haystack Munster Buttermilk*

D

6. *The Ballydesmond No. 2*

Am

16. *The Belfast Hornpipe Sweep's Hornpipe*

3

7. *The Ballydesmond No. 3*

G G

17. *Bell Table*

8. *Banish Misfortune*

D C D C

18. *Bill Collins' Jig Dan Collins' Father's*

9. *The Banks of Allen Water*

D

19. *Bill Sullivan's*

10. *The Banks of Spey*

Am G

20. *Billowing Waves*

Am

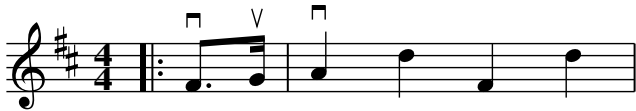
21. *The Bird In The Bush*22. *The Blackberry Blossom*23. *The Blackthorn Stick*24. *The Blarney Pilgrim*25. *Bonnie Ann*26. *The Boyne Hunt*27. *The Boys of Ballisodare*28. *Boys of Blue Hill*29. *The Boys Of Malin*30. *The Braes of Tulliemet*31. *Brendan Tonra's*32. *Brian Boru's March (3-part)*33. *Brid Harper's*34. *The Britches Full Of Stitches*35. *The Brosna*36. *The Brosna Slides*37. *The Bucks of Oranmore*38. *Bundle and go*39. *Butter And Peas*40. *Caileach an Airgid (The Hag With The Money)*

41. Calliope House



42. Cape Breton Set

The Glencoe March

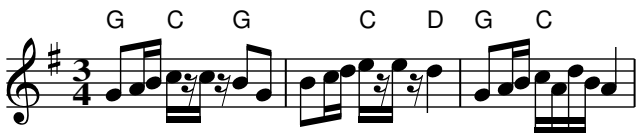


43. Capers



Violin

44. Carina Normansson's Polska



45. The Cashmere Shawl



46. Catharsis



47. Cathcart



48. Charlie Harris' Polka



49. Christmas Eve

Tommy Coen's



50. Christy Barry's #2



51. The Church of Dromore



52. The Cliffs Of Moher



53. Con Cassidy's

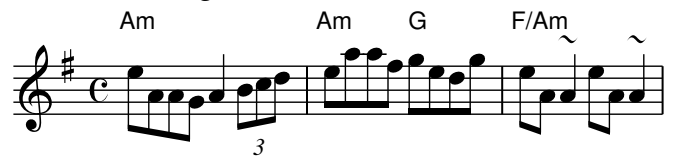
Tracey's Set



54. The Concertina



55. The Congress Reel



56. The Connachtman's Rambles



57. The Connaughtman's Rambles



58. The Copenhagen



59. Creggs Pipes

Greig's Pipes



60. Crested Hens

Les Poules Huppees



61. *The Crock Of Gold*

8

62. *Cuil Aodha Slide*

Violin

63. *The Cup Of Tea*

64. *The Cup of Tea*

65. *Curstaigh's Farewell*

1st Violin

66. *Cylinder Kontra fra Min*

Violin

V

67. *Da Boannie Polka*

68. *Da Slookit Light*

69. *Dal Jerks Gånglåt*

Violin

70. *The Dark Island*

71. *Dark Lowers the Night*

72. *The Deerness Reel*

73. *The Derry Hornpipe*

74. *Dill Pickle Rag*

1st Violin

V1

75. *Dinke's*

76. *Dirty Linnen*

Paddy Be Easy

77. *Donald Blue*

78. *Donnybrook Fair*

Joy of my Life

79. *Dowd's No. 9*

80. *Down The Back Lane*

Recorded on flat pipes - music notation for reference



82. *Dragon's Blood*



83. *The Draught of Ale*



84. *The Drunken Gauger*



85. *The Dublin*



86. *The Duke of Gordon's Birthday*



87. *Duke of Kent's Waltz*



88. *The Dunmore Lassies*



89. *The Earl's Chair*



90. *Evenesdalingen*



91. *Farrel O'Gara's*

11



92. *Father Kelly's*



93. *Felix the Wrestler*



94. *Femspring*

Five-step



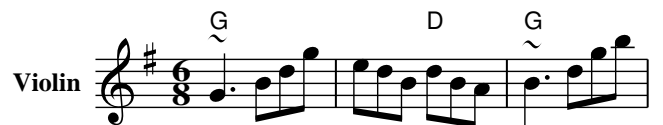
95. *A Fig For A Kiss*



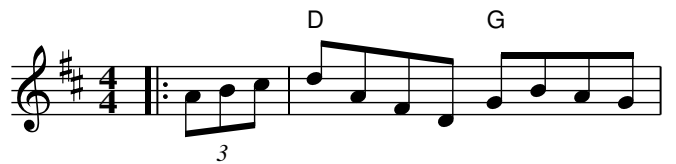
96. *The Finnish*



97. *The First of February*



98. *Fisher's Hornpipe*




99. *The Flooded Road To Glenties*



100. *Florida Blues*



101. *The Flower o' the Quern*

1st Violin 

102. *The Fourty Two Pound Cheque*



103. *The Fox On The Town*



104. *The Foxhunter's*



105. *Frank's*



106. *Frankie Kennedy's*



107. *The Frost Is All Over*



108. *The Galway*



109. *Galway Reel*

The Ironing Board



110. *The Gander In The Pratie Hole*



111. *Garrett Barry's*



112. *The Geese In The Bog*



113. *Gille Crubach*




114. *Glen Allen*



115. *The Glencoe March*



116. *Caisleán An Óir*



117. *The Golden Keyboard*



118. *The Granton Backstep*




119. *The Gravel Walks*



120. *Great Uncle Henry*



121. *The Green Cottage*

Violin Musical notation for 'The Green Cottage' in 6/8 time, key of D major. Chord: Em.

122. *The Green Gates*

Musical notation for 'The Green Gates' in 4/4 time, key of D major. Chords: G, Am. Includes triplets.

123. *The Green Mountain*

Musical notation for 'The Green Mountain' in 4/4 time, key of D major. Includes accents.

124. *The Guns Of The Magnificent Seven*

Musical notation for 'The Guns Of The Magnificent Seven' in 4/4 time, key of D major. Includes repeat sign.

125. *The Hag At The Churn*

Musical notation for 'The Hag At The Churn' in 6/8 time, key of D major. Includes repeat sign.

126. *The Hare In The Corn*

Musical notation for 'The Hare In The Corn' in 6/8 time, key of D major. Includes repeat sign.

127. *The Haunted House*

Musical notation for 'The Haunted House' in 6/8 time, key of D major. Chords: G, D, G, Em. Includes repeat sign.

128. *Hewlett*

Planxy Hewlett

Musical notation for 'Hewlett' in 6/8 time, key of D major. Chords: D, A7.

129. *Hey Jude*

Musical notation for 'Hey Jude' in 4/4 time, key of D major. Includes repeat sign.

130. *The High Road To Linton*

Musical notation for 'The High Road To Linton' in 4/4 time, key of D major. Includes repeat sign.

131. *Hole in the Wall*

Capo 3: Bb = G, F = D, Gm = Em, Dm = Bm, Eb = C, D7 = B7

Musical notation for 'Hole in the Wall' in 3/4 time, key of Bb major. Chords: Bb, F, Gm, Dm, Eb, Bb.

132. *The Home Ruler*

Musical notation for 'The Home Ruler' in 4/4 time, key of D major.

133. *The Humours Of Tullycrine*

Musical notation for 'The Humours Of Tullycrine' in 4/4 time, key of D major. Includes repeat sign.

134. *The Humours Of Ballyloughlin*

Musical notation for 'The Humours Of Ballyloughlin' in 6/8 time, key of D major. Includes repeat sign.

135. *The Humours of Ballyloughlin*

Musical notation for 'The Humours of Ballyloughlin' in 6/8 time, key of D major. Chord: D5.

136. *The Humours of Castle Comer*

Musical notation for 'The Humours of Castle Comer' in 6/8 time, key of D major. Chord: Em.

137. *Humors of Ennistymon*

Musical notation for 'Humors of Ennistymon' in 6/8 time, key of D major. Includes accents.

138. *The Humours Of Tulla*

Kilmaley

Musical notation for 'The Humours Of Tulla' in 4/4 time, key of D major. Includes repeat sign.

139. *The Hut On Staffin Island*

Musical notation for 'The Hut On Staffin Island' in 4/4 time, key of D major. Chords: A7, D, D, Bm. Includes repeat sign.

140. *The Hut on Staffin Island*

Musical notation for 'The Hut on Staffin Island' in common time, key of D major. Chord: D.

141. *I Ne'er Shall Wean Her*

Musical notation for 'I Ne'er Shall Wean Her' in G major, 6/8 time. The melody consists of a series of eighth notes: G4, A4, B4, C5, B4, A4, G4.

142. *If We Hadn't Any Women In The World*

Musical notation for 'If We Hadn't Any Women In The World' in G major, 4/4 time. The melody consists of quarter notes: G4, A4, B4, C5, B4, A4, G4.

143. *If We Hadn't Any Women In The World*

Musical notation for 'If We Hadn't Any Women In The World' in G major, 4/4 time. The melody consists of quarter notes: G4, A4, B4, C5, B4, A4, G4.

144. *Inisheer*

Musical notation for 'Inisheer' in G major, 3/4 time. The melody consists of quarter notes: G4, A4, B4, C5, B4, A4, G4. Chords G and Bm are indicated above the staff.

145. *Jack Broke Da Prison Door*

Musical notation for 'Jack Broke Da Prison Door' (Violin) in G major, 4/4 time. The melody consists of eighth notes: G4, A4, B4, C5, B4, A4, G4. Chords G, C, and D are indicated above the staff.

Musical notation for 'Jack Broke Da Prison Door' (V) in G major, 4/4 time. The melody consists of eighth notes: G4, A4, B4, C5, B4, A4, G4. Chord G is indicated above the staff.

146. *Jackie Coleman's*

Musical notation for 'Jackie Coleman's' in G major, 4/4 time. The melody consists of eighth notes: G4, A4, B4, C5, B4, A4, G4.

147. *Jenny's Chickens*

Musical notation for 'Jenny's Chickens' in G major, 4/4 time. The melody consists of eighth notes: G4, A4, B4, C5, B4, A4, G4.

148. *Jerry's Beaver Hat*

Musical notation for 'Jerry's Beaver Hat' in G major, 6/8 time. The melody consists of eighth notes: G4, A4, B4, C5, B4, A4, G4. Chords D and Bm are indicated above the staff.

149. *Jessica's Polka*

Musical notation for 'Jessica's Polka' in G major, 2/4 time. The melody consists of quarter notes: G4, A4, B4, C5, B4, A4, G4. Chords A and E are indicated above the staff.

150. *Jim Ward's*

Musical notation for 'Jim Ward's' in G major, 6/8 time. The melody consists of eighth notes: G4, A4, B4, C5, B4, A4, G4.

151. *Jimmy Lyons*

Musical notation for 'Jimmy Lyons' in G major, 4/4 time. The melody consists of eighth notes: G4, A4, B4, C5, B4, A4, G4. Chords A, D, and E are indicated above the staff.

Musical notation for 'Jimmy Lyons' in G major, 4/4 time. The melody consists of eighth notes: G4, A4, B4, C5, B4, A4, G4. Chord A is indicated above the staff.

152. *Cooley's*

Musical notation for 'Cooley's' in G major, 4/4 time. The melody consists of eighth notes: G4, A4, B4, C5, B4, A4, G4. Chords Em and Em are indicated above the staff.

153. *John Ryan's*

Musical notation for 'John Ryan's' in G major, 2/4 time. The melody consists of quarter notes: G4, A4, B4, C5, B4, A4, G4.

154. *Johnny Macklejohn's*

Musical notation for 'Johnny Macklejohn's' in G major, 4/4 time. The melody consists of quarter notes: G4, A4, B4, C5, B4, A4, G4.

155. *Josefin's*

Musical notation for 'Josefin's' in G major, 3/4 time. The melody consists of quarter notes: G4, A4, B4, C5, B4, A4, G4. Chord G is indicated above the staff.

156. *Julia Delaney*

Musical notation for 'Julia Delaney' in G major, 4/4 time. The melody consists of quarter notes: G4, A4, B4, C5, B4, A4, G4. Chords Dm, C, and Dm are indicated above the staff.

157. *The Kelburn Brewer*

Musical notation for 'The Kelburn Brewer' (Violin) in G major, 4/4 time. The melody consists of eighth notes: G4, A4, B4, C5, B4, A4, G4. Chords C, Em, and F are indicated above the staff.

158. *The Kesh*

Musical notation for 'The Kesh' in G major, 6/8 time. The melody consists of eighth notes: G4, A4, B4, C5, B4, A4, G4.

159. *The Kid on the Mountain*

Musical notation for 'The Kid on the Mountain' in G major, 9/8 time. The melody consists of eighth notes: G4, A4, B4, C5, B4, A4, G4. Tildes are placed above the notes.

160. *Kilglass Lakes*

Musical notation for 'Kilglass Lakes' in G major, 6/8 time. The melody consists of eighth notes: G4, A4, B4, C5, B4, A4, G4.

161. The Killavil

162. King George IV's Strathspey

163. Kitty Lie Over

164. Kitty Sean Cunningham's

165. Kitty's Wedding

166. L'Air Mignonne

167. La Cardeuse

168. Last Night's Fun

169. The Left Handed Fiddler

170. Leslie's March

171. Lexie McAskill

172. The Liltin' Banshee

173. Lime Hill

174. The Lismore Lassie

175. The Lismurrane Lamps

176. The Little Diamond

177. Lonesome Jig

Rolling Waves

178. Lord MacDonald's

179. Low Highland

180. The Seven Step

181. Luke Skywalker Walks On Sunshine

Musical notation for 'Luke Skywalker Walks On Sunshine' in G major, 7/8 time. The melody consists of eighth and quarter notes.

182. Luna

Musical notation for 'Luna' in G major, 4/4 time. Chords A, E, Bm, and D are indicated above the staff.

183. Mad Jig

Musical notation for 'Mad Jig' in G major, 6/8 time. The melody features a repeat sign and a fermata.

184. Maggie's Pancakes

Musical notation for 'Maggie's Pancakes' in G major, 4/4 time. Chords Bm, G, and A are indicated above the staff.

185. The Maid Behind The Bar

Musical notation for 'The Maid Behind The Bar' in G major, 4/4 time. The melody includes a repeat sign.

186. The Maids Of Mount Cisco

Musical notation for 'The Maids Of Mount Cisco' in G major, 4/4 time. The melody features a series of eighth notes with accents.

187. Margaret McKenzie's Farewell

Musical notation for 'Margaret McKenzie's Farewell' in G major, 3/4 time. Chord A is indicated above the staff.

188. Martin Wynne's

Musical notation for 'Martin Wynne's' in G major, 4/4 time. The melody features a series of eighth notes with accents.

189. Master McDermott's

Musical notation for 'Master McDermott's' in G major, 4/4 time. The melody includes a repeat sign and a fermata.

190. May Day

Miss McLeod's Reel

Musical notation for 'May Day' in G major, 4/4 time. Chords G, C, G, D7, G, and C are indicated above the staff.

191. McHugh's

Musical notation for 'McHugh's' in G major, 6/8 time. The melody consists of eighth and quarter notes.

192. Meitheal Reel

Musical notation for 'Meitheal Reel' in G major, common time. The melody includes a repeat sign.

193. The Merry Blacksmith

Musical notation for 'The Merry Blacksmith' in G major, 4/4 time. Chord D is indicated above the staff.

194. Merry Sisters of Fate

Musical notation for 'Merry Sisters of Fate' in G major, 6/8 time. Chord Am is indicated above the staff, and triplets are marked with '3'.

195. Michael's Mazurka

Musical notation for 'Michael's Mazurka' in G major, 3/4 time. Chords G and G/B are indicated above the staff.

196. Midnight On The Water

Musical notation for 'Midnight On The Water' in G major, 3/4 time. Chord D is indicated above the staff.

197. Mike McGoldrick's

Musical notation for 'Mike McGoldrick's' in G major, 6/8 time. The melody includes a repeat sign.

198. Miserlou

Musical notation for 'Miserlou' in G major, 4/4 time. Chords E, F, and E are indicated above the staff.

199. Miss Monaghan

Musical notation for 'Miss Monaghan' in G major, 4/4 time. The melody includes a repeat sign.

200. Miss Rowan Davies

Musical notation for 'Miss Rowan Davies' in G major, 3/4 time. It includes an 'Intro' box and chords G and D.

201. Miss Thompson's

202. The Mist Covered Motorway

203. The Mist On The Mountain

204. The Morning Star

205. Morrison's

206. Morrison's Bush

207. The Mountain Road

208. Mouse in the Mug

209. Mr. O'Connor

210. Mrs. Poer
"Carolan's Concerto"

211. Grandpa Tommy's Ceili Band
Mulhaire's No 4

212. Munster Bacon

213. Murphy's Hornpipe

214. The Murroe

215. The Musical Priest

216. My Darling Asleep

217. Nail That Catfish to the Tree

218. Neil Gow's Lament
(On the Death of his Second Wife)

219. The New Copperplate

220. O'Keefe's

221. *O'Neill's March*

A Em D Em D 4 times **B** Em D

Em D **C** Am G

222. Off To California

3 G D G C 3

223. The Old Bush

224. Old Butter Road

225. The Old Copperplate

226. Old Grey Cat

1st Violin Em

V1 D

227. Oot Be Est Da Vong

Violin D G

228. Orkney

229. The Orphan

230. The Otter's Holt

Wellington Session Archive 3

231. Out On The Ocean

232. Over The Moor To Maggie

233. Paddy Be Easy

Am V G Am

234. Paddy Fahey's Jig #1

Gm Dm

235. Paddy Fahey's No. 14

236. Paddy Fahey's No. 6

237. Paddy Fahey's

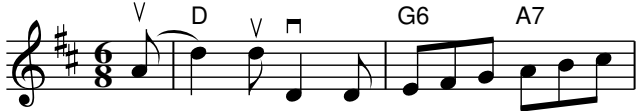
238. Paddy Hudai's

James Byrne's

239. Paddy's Trip to Scotland

240. Parnell's March

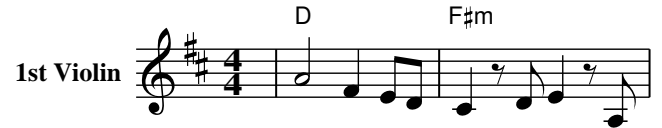
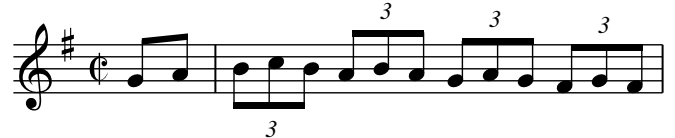
Tracey's Set

241. *The Peeler's Jacket*242. *Perry's Reel*243. *Peter's Peerie Boat*244. *The Pipe On The Hob*245. *The Plains Of Boyle*246. *Poll Ha'Penny*247. *The Rakes Of Kildare*248. *The Rambling Sailor*249. *the Reconciliation*

the Olive Branch Hornpipe

Humphrey's Reel

Crannciuil Umfrei

250. *The Red-haired Lass*251. *Red Tom Of The Hills*252. *Reel de Montreal*253. *Return From Helsinki*254. *Return from India*255. *Riding on a Hand Car*256. *Rights of Man*257. *The River Bend*258. *The Road To Lisdoonvarna*259. *Rolling Waves*260. *Rolling in the Ryegrass*

Shannon Breeze



261. *The Roscommon*

Musical notation for 'The Roscommon' in G major, 4/4 time. The melody consists of a series of eighth and quarter notes.

262. *The Rose in the Heather*

Musical notation for 'The Rose in the Heather' in G major, 6/8 time. The melody features a mix of eighth and quarter notes.

263. *Saddle The Pony*

Musical notation for 'Saddle The Pony' in G major, 6/8 time. The melody is characterized by eighth notes and quarter notes.

264. *The Sailor's Bonnet*

Musical notation for 'The Sailor's Bonnet' in G major, 4/4 time. The melody includes dotted notes and eighth notes.

265. *The Salamanca Reel*

Musical notation for 'The Salamanca Reel' in G major, 6/8 time. It features triplet markings over eighth notes.

266. *The Salvation*

Musical notation for 'The Salvation' in G major, 4/4 time. The melody is composed of eighth and quarter notes.

267. *The Seven Step Polka*

Musical notation for 'The Seven Step Polka' in G major, 4/4 time. It includes chord markings G, D, and G above the staff.

268. *The Shetland Fiddler*

Musical notation for 'The Shetland Fiddler' in G major, 4/4 time. The melody consists of eighth and quarter notes.

269. *Ships are Sailing*

Musical notation for 'Ships are Sailing' in G major, 4/4 time. It features chord markings Em, D, Em, and G, along with triplet markings.

270. *The Shoemaker's Fancy*

Musical notation for 'The Shoemaker's Fancy' in G major, 6/8 time. The melody is primarily composed of eighth notes.

271. *The Silver Spear*

Musical notation for 'The Silver Spear' in G major, 4/4 time. It includes chord markings D and G above the staff.

272. *The Silver Spire*

Musical notation for 'The Silver Spire' in G major, 4/4 time. The melody consists of eighth and quarter notes.

273. *The Silver Spire*

Musical notation for 'The Silver Spire' in G major, 4/4 time. It includes chord markings D, Em, and D/F# above the staff.

274. *Siobhan O'Donnell's*

Musical notation for 'Siobhan O'Donnell's' in G major, 4/4 time. The melody features dotted notes and eighth notes.

275. *The Skylark*

Musical notation for 'The Skylark' in G major, 4/4 time. The melody consists of eighth and quarter notes.

276. *Slangs Very Much (Polska)*

Musical notation for 'Slangs Very Much (Polska)' in G major, 3/4 time. It includes chord markings Am, E, Am, E, and Am above the staff.

277. *Sliabh Russell*

Musical notation for 'Sliabh Russell' in G major, 6/8 time. The melody is composed of eighth notes.

278. *The Sligo Maid*

Musical notation for 'The Sligo Maid' in G major, 4/4 time. It includes a triplet marking over eighth notes.

279. *Small Feet*

Musical notation for 'Small Feet' in G major, 4/4 time. It features a triplet marking over eighth notes.

280. *The Snowy Path*

Musical notation for 'The Snowy Path' in G major, 9/8 time. It includes chord markings D and G above the staff.

281. *Sonny's*282. *Sourgrass And Granite*283. *Spoostiskerry*284. *The Sporting Pitchfork*285. *Saint Anne's*286. *The Star Of Munster*287. *Step Ahead Polska*288. *Stone's Rag*289. *The Stool Of Repentance*290. *Storhurven*

(Polska)

291. *Swinging on the Gate*292. *Tam Lin**Glasgow Reel*293. *Tar Road To Sligo*294. *The Curlew*295. *The Fox in The Town*296. *The Shannon Jig*297. *The Square Of Crossmaglen*298. *Tobin's Favourite*299. *Tom's Blue Boat*300. *Tommy Peoples'*

301. *Top It Off*

Musical notation for 'Top It Off' in G major, 2/8 time. The melody consists of eighth and sixteenth notes.

302. *Torn Jacket*

Musical notation for 'Torn Jacket' in G major, 4/4 time. The melody features quarter and eighth notes.

303. *Toss The Feathers*

Musical notation for 'Toss The Feathers' in G major, 4/4 time. The melody includes quarter and eighth notes with a fermata over the final note.

304. *Toss The Feathers*

Musical notation for 'Toss The Feathers' in G major, 4/4 time. Chords Em, Em, and D are indicated above the staff.

305. *The Trip to Pakistan*

Musical notation for 'The Trip to Pakistan' in G major, common time. The melody features eighth and sixteenth notes with a fermata.

306. *Tripping Up The Stairs*

Musical notation for 'Tripping Up The Stairs' in G major, 6/8 time. The melody consists of eighth and quarter notes.

307. *Troika*

1st Violin

Musical notation for 'Troika' in G major, 4/4 time. Chord Am is indicated above the staff. The notation includes triplets and accents.

308. *The Twisted Bridge*

Musical notation for 'The Twisted Bridge' in G major, 3/2 time. Chords A and E are indicated above the staff. The melody features triplets.

309. *250 To Vigo*

Musical notation for '250 To Vigo' in G major, 4/4 time. The melody consists of eighth and quarter notes.

310. *Village Of Cong*

Musical notation for 'Village Of Cong' in G major, 4/4 time. The melody consists of quarter and eighth notes.

311. *Waiting for Jody*

Musical notation for 'Waiting for Jody' in G major, 4/4 time. Chord G is indicated above the staff. The melody features eighth and quarter notes.

Musical notation for 'Waiting for Jody' in G major, 4/4 time. The melody consists of quarter and eighth notes.

312. *Will You Come Home With Me*

Musical notation for 'Will You Come Home With Me' in G major, 6/8 time. The melody consists of quarter and eighth notes.

313. *Will You Come Down To Limerick*

Musical notation for 'Will You Come Down To Limerick' in G major, 3/8 time. The melody consists of quarter and eighth notes.

314. *Willafjord*

Musical notation for 'Willafjord' in G major, 4/4 time. The melody consists of quarter and eighth notes.

315. *Wilton*

Musical notation for 'Wilton' in G major, 6/8 time. The melody consists of quarter and eighth notes.

316. *The Wind That Shakes The Barley*

Musical notation for 'The Wind That Shakes The Barley' in G major, 4/4 time. The melody consists of quarter and eighth notes.

317. *The Wise Maid*

Musical notation for 'The Wise Maid' in G major, 4/4 time. Chord D is indicated above the staff. The melody consists of quarter and eighth notes.

318. *Yetts of Muchart*

Violin

Musical notation for 'Yetts of Muchart' in G major, 4/4 time. Chords A, D, and E7 are indicated above the staff. The melody consists of quarter and eighth notes.