

Jigs

Apples In Winter

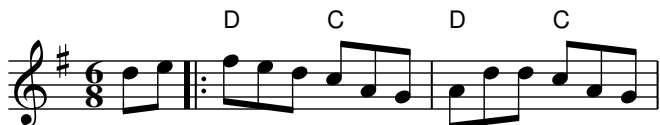


Arthur Darley's

Swedish Jig



Banish Misfortune



Behind the Haystack

Munster Buttermilk



Bill Collins' Jig

Dan Collins' Father's



Billowing Waves



The Blackthorn Stick



The Blarney Pilgrim



Brendan Tonra's



Brid Harper's



Bundle and go



Caileach an Airgid (The Hag With The Money)



Calliope House



Capers



Christy Barry's #2



The Church of Dromore



The Cliffs Of Moher



Con Cassidy's

Tracey's Set



The Connachtman's Rambles



The Connaughtman's Rambles



The Copenhagen

Musical notation for 'The Copenhagen' in G major, 6/8 time. The melody starts on G4 and moves up stepwise to D5. Chords G and D7 are indicated above the staff.

Dirty Linnen

Paddy Be Easy

Musical notation for 'Dirty Linnen' in G major, 6/8 time. The melody features a rhythmic pattern of eighth and sixteenth notes.

Donnybrook Fair

Joy of my Life

Musical notation for 'Donnybrook Fair' in G major, 6/8 time. The melody is a simple, stepwise line.

Down The Back Lane

Musical notation for 'Down The Back Lane' in G major, 6/8 time. The melody starts on G4 and moves up to D5.

Down The Back Lane

Recorded on flat pipes - music notation for reference

Musical notation for 'Down The Back Lane' in G major, 6/8 time, recorded on flat pipes. The melody is similar to the previous version but with a different timbre.

The Draught of Ale

Musical notation for 'The Draught of Ale' in G major, 6/8 time. The melody starts on G4 and moves up to D5. Chord G is indicated above the staff.

The Drunken Gauger

Musical notation for 'The Drunken Gauger' in G major, 6/8 time. The melody features a rhythmic pattern of eighth and sixteenth notes.

Felix the Wrestler

Musical notation for 'Felix the Wrestler' in G major, 6/8 time. The melody starts on G4 and moves up to D5. Chords A and C are indicated above the staff.

A Fig For A Kiss

Musical notation for 'A Fig For A Kiss' in G major, 6/8 time. The melody features a rhythmic pattern of eighth and sixteenth notes.

The First of February

Musical notation for 'The First of February' in G major, 6/8 time. The melody starts on G4 and moves up to D5. Chords G, D, and G are indicated above the staff. The word 'Violin' is written to the left of the staff.

The Foxhunter's

Musical notation for 'The Foxhunter's' in G major, 6/8 time. The melody starts on G4 and moves up to D5.

Frankie Kennedy's

Musical notation for 'Frankie Kennedy's' in G major, 6/8 time. The melody features a rhythmic pattern of eighth and sixteenth notes.

The Frost Is All Over

Musical notation for 'The Frost Is All Over' in G major, 6/8 time. The melody starts on G4 and moves up to D5.

The Gander In The Pratie Hole

Musical notation for 'The Gander In The Pratie Hole' in G major, 6/8 time. The melody starts on G4 and moves up to D5. Chords D and A7 are indicated above the staff.

Garrett Barry's

Musical notation for 'Garrett Barry's' in G major, 6/8 time. The melody starts on G4 and moves up to D5.

The Geese In The Bog

Musical notation for 'The Geese In The Bog' in G major, 6/8 time. The melody starts on G4 and moves up to D5. Chord C is indicated above the staff.

The Green Cottage

Musical notation for 'The Green Cottage' in G major, 6/8 time. The melody starts on G4 and moves up to D5. Chord Em is indicated above the staff. The word 'Violin' is written to the left of the staff.

The Hag At The Churn

Musical notation for 'The Hag At The Churn' in G major, 6/8 time. The melody starts on G4 and moves up to D5.

The Hare In The Corn

Musical notation for 'The Hare In The Corn' in G major, 6/8 time. The melody starts on G4 and moves up to D5.

The Haunted House

Musical notation for 'The Haunted House' in G major, 6/8 time. The melody starts on G4 and moves up to D5. Chords G, D, G, and Em are indicated above the staff.

The Humours Of Ballyloughlin



The Humours of Ballyloughlin



The Humours of Castle Comer



Humors of Ennistymon



I Ne'er Shall Wean Her



Jerry's Beaver Hat



Jim Ward's



The Kesh



The Kid on the Mountain



Kilglass Lakes



The Killavil



Kitty Lie Over



The Leg Of The Duck



Leslie's March



The Liltin' Banshee



Lonesome Jig

Rolling Waves



Low Highland



Luke Skywalker Walks On Sunshine



Mad Jig



McHugh's



Merry Sisters of Fate

Musical notation for 'Merry Sisters of Fate' in G major, 6/8 time. The piece features two staves of music. The first staff has a treble clef and a key signature of one sharp (F#). It begins with an Am chord and contains two triplet markings over the eighth notes. The second staff continues the melody.

Mike McGoldrick's

Musical notation for 'Mike McGoldrick's' in G major, 6/8 time. It consists of a single staff with a treble clef and a key signature of one sharp (F#). The piece starts with a repeat sign and a double bar line.

The Mist On The Mountain

Musical notation for 'The Mist On The Mountain' in G major, 6/8 time. It consists of a single staff with a treble clef and a key signature of one sharp (F#). The piece starts with a repeat sign and a double bar line.

Morrison's

Musical notation for 'Morrison's' in G major, 6/8 time. It consists of a single staff with a treble clef and a key signature of one sharp (F#). The piece starts with a repeat sign and a double bar line, featuring a fermata over the first note.

Mouse in the Mug

Musical notation for 'Mouse in the Mug' in G major, 6/8 time. It consists of a single staff with a treble clef and a key signature of one sharp (F#). The piece starts with a repeat sign and a double bar line, featuring a fermata over the first note.

Munster Bacon

Musical notation for 'Munster Bacon' in G major, 6/8 time. It consists of a single staff with a treble clef and a key signature of one sharp (F#). The piece starts with a repeat sign and a double bar line.

My Darling Asleep

Musical notation for 'My Darling Asleep' in G major, 6/8 time. It consists of a single staff with a treble clef and a key signature of one sharp (F#). The piece starts with a repeat sign and a double bar line.

The Orphan

Musical notation for 'The Orphan' in G major, 6/8 time. It consists of a single staff with a treble clef and a key signature of one sharp (F#). The piece starts with a repeat sign and a double bar line, featuring a fermata over the first note.

Out On The Ocean

Musical notation for 'Out On The Ocean' in G major, 6/8 time. It consists of a single staff with a treble clef and a key signature of one sharp (F#). The piece starts with a repeat sign and a double bar line.

Paddy Be Easy

Musical notation for 'Paddy Be Easy' in G major, 6/8 time. It consists of a single staff with a treble clef and a key signature of one sharp (F#). The piece has Am, G, and Am chords and includes a fermata over the first note.

Paddy Fahey's Jig #1

Musical notation for 'Paddy Fahey's Jig #1' in G major, 6/8 time. It consists of a single staff with a treble clef and a key signature of one sharp (F#). The piece has Gm and Dm chords.

Paddy Fahey's

Musical notation for 'Paddy Fahey's' in G major, 6/8 time. It consists of a single staff with a treble clef and a key signature of one sharp (F#). The piece starts with a repeat sign and a double bar line.

Paddy Hudai's

Musical notation for 'Paddy Hudai's' in G major, 6/8 time. It consists of a single staff with a treble clef and a key signature of one sharp (F#). The piece starts with a repeat sign and a double bar line.

Peter's Peerie Boat

Musical notation for 'Peter's Peerie Boat' in G major, 6/8 time. It consists of a single staff with a treble clef and a key signature of one sharp (F#). The piece has V, D, V, G6, and A7 chords.

The Pipe On The Hob

Musical notation for 'The Pipe On The Hob' in G major, 6/8 time. It consists of a single staff with a treble clef and a key signature of one sharp (F#). The piece starts with a repeat sign and a double bar line.

The Rakes Of Kildare

Musical notation for 'The Rakes Of Kildare' in G major, 6/8 time. It consists of a single staff with a treble clef and a key signature of one sharp (F#). The piece starts with a repeat sign and a double bar line.

Riding on a Hand Car

Musical notation for 'Riding on a Hand Car' in G major, 6/8 time. It consists of a single staff with a treble clef and a key signature of one sharp (F#). The piece has an A chord.

The River Bend

Musical notation for 'The River Bend' in G major, 6/8 time. It consists of a single staff with a treble clef and a key signature of one sharp (F#). The piece has an A chord.

Rolling Waves

Musical notation for 'Rolling Waves' in G major, 6/8 time. It consists of a single staff with a treble clef and a key signature of one sharp (F#). The piece starts with a repeat sign and a double bar line.

The Rose in the Heather



Saddle The Pony



The Shoemaker's Fancy



Sliabh Russell



The Snowy Path



The Sporting Pitchfork



Saint Patrick's Day



The Stool Of Repentance



Tar Road To Sligo



The Mad Piper



The Shannon Jig



The Tenpenny Bit



Tobin's Favourite



Top It Off



Wha'll Be King But Charlie



Will You Come Home With Me



Will You Come Down To Limerick



Wilton



Reels

The Air Tune



The Bag Of Spuds



The Banshee



The Bird In The Bush



The Blackberry Blossom



The Boyne Hunt



The Boys of Ballisodare



The Boys Of Malin



The Bucks of Oranmore

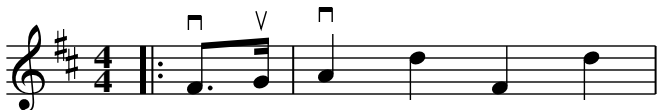


Butter And Peas



Cape Breton Set

The Glencoe March



The Cashmere Shawl



Catharsis



Christmas Eve

Tommy Coen's



The Concertina

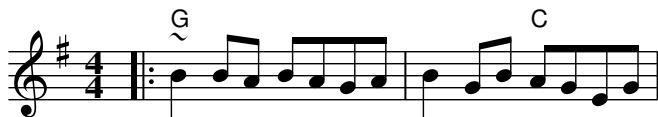


The Congress Reel



Creggs Pipes

Greig's Pipes



The Crock Of Gold



The Cup Of Tea



The Cup of Tea



Da Slockit Light



The Deerness Reel



Dinkey's



Doctor Gilbert's



Donald Blue



Dowd's No. 9



The Dublin



The Dunmore Lassies



The Earl's Chair



Farrel O'Gara's



Father Kelly's



The Flooded Road To Glenties



The Fox On The Town



Frank's



Galway Reel
The Ironing Board



Glen Allen



The Glencoe March



The Golden Keyboard



The Gravel Walks



The Green Gates



The Green Mountain



The Guns Of The Magnificent Seven





The Humours Of Tulla

Kilmaley



Jack Broke Da Prison Door



Jackie Coleman's



Jenny's Chickens



Cooley's



Johnny Macklejohn's

Johnny Mclljohn's



Julia Delaney



La Cardeuse



Larry Redican's

The Culfadda



Last Night's Fun



The Left Handed Fiddler



Lexie McAskill



The Lismore Lassie



The Lismurrane Lamps



Lord MacDonald's



Love At The Endings



Maggie's Pancakes



The Maid Behind The Bar



The Maids Of Mount Cisco



Martin Wynne's No. 2



Master McDermott's



May Day

Miss McLeod's Reel



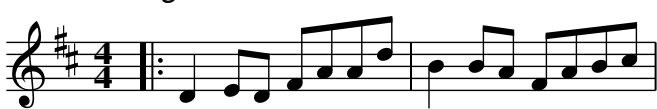
Meitheal Reel



The Merry Blacksmith



Miss Monaghan



Miss Thompson's



The Morning Star



The Mountain Road



Grandpa Tommy's Ceili Band

Mulhaire's No 4



The Musical Priest



Nail That Catfish to the Tree



The New Copperplate



The New Mown Meadows



The Old Bush



Old Butter Road



The Old Copperplate



Old Grey Cat



Oot Be Est Da Vong



The Otter's Holt



Over The Moor To Maggie

Paddy Fahey's No. 14

Paddy Fahey's No. 6

Paddy's Trip to Scotland

The Peeler's Jacket

Perry's Reel

Violin

Rantan Highlandman

the Reconciliation

the Olive Branch Hornpipe

Humphrey's Reel

Crannciuil Umfrei

The Red-haired Lass

Red Tom Of The Hills

Reel de Montreal

Violin

Return From Helsinki

1st Violin

Return from India

Violin

Rolling in the Ryegrass

Shannon Breeze

The Roscommon

The Sailor's Bonnet

The Salamanca Reel

The Salvation

The Shetland Fiddler

Ships are Sailing

The Silver Spear

Musical notation for 'The Silver Spear' in G major, 4/4 time. It features a first ending with a repeat sign and a fermata over the final note. Chords D and G are indicated above the staff.

The Silver Spire

Musical notation for 'The Silver Spire' in G major, 4/4 time. It features a first ending with a repeat sign and a fermata over the final note.

The Silver Spire

Musical notation for 'The Silver Spire' in G major, 4/4 time. It features a first ending with a repeat sign and a fermata over the final note. Chords D, Em, and D/F# are indicated above the staff.

Siobhan O'Donnell's

Musical notation for 'Siobhan O'Donnell's' in G major, 4/4 time. It features a first ending with a repeat sign and a fermata over the final note.

The Skylark

Musical notation for 'The Skylark' in G major, 4/4 time. It features a first ending with a repeat sign and a fermata over the final note.

The Sligo Maid

Musical notation for 'The Sligo Maid' in G major, 4/4 time. It features a first ending with a repeat sign and a fermata over the final note. A triplet of eighth notes is marked with a '3' below it.

Spindleshanks

Mulqueen's

Musical notation for 'Spindleshanks' in G major, 4/4 time. It features a first ending with a repeat sign and a fermata over the final note.

Spoostiskerry

Musical notation for 'Spoostiskerry' in G major, 4/4 time. It features a first ending with a repeat sign and a fermata over the final note.

Saint Anne's

Musical notation for 'Saint Anne's' in G major, 4/4 time. It features a first ending with a repeat sign and a fermata over the final note.

The Star Of Munster

Musical notation for 'The Star Of Munster' in G major, 4/4 time. It features a first ending with a repeat sign and a fermata over the final note.

Swinging on the Gate

Musical notation for 'Swinging on the Gate' in G major, 4/4 time. It features a first ending with a repeat sign and a fermata over the final note.

Tam Lin

Glasgow Reel

Musical notation for 'Tam Lin' in G minor, 4/4 time. It features a first ending with a repeat sign and a fermata over the final note.

The Curlew

Musical notation for 'The Curlew' in G major, 4/4 time. It features a first ending with a repeat sign and a fermata over the final note. A triplet of eighth notes is marked with a '3' below it.

The Fox in The Town

Musical notation for 'The Fox in The Town' in G major, 4/4 time. It features a first ending with a repeat sign and a fermata over the final note.

The Square Of Crossmaglen

Musical notation for 'The Square Of Crossmaglen' in G minor, 4/4 time. It features a first ending with a repeat sign and a fermata over the final note.

Tommy Peoples'

Musical notation for 'Tommy Peoples'' in G major, 4/4 time. It features a first ending with a repeat sign and a fermata over the final note.

Torn Jacket

Musical notation for 'Torn Jacket' in G major, 4/4 time. It features a first ending with a repeat sign and a fermata over the final note.

Toss The Feathers

Musical notation for 'Toss The Feathers' in G major, 4/4 time. It features a first ending with a repeat sign and a fermata over the final note.

Toss The Feathers

Musical notation for 'Toss The Feathers' in G major, 4/4 time. It features a first ending with a repeat sign and a fermata over the final note. Chords Em, Em, and D are indicated above the staff.

The Trip to Pakistan

Musical notation for 'The Trip to Pakistan' in G major, common time. It features a first ending with a repeat sign and a fermata over the final note.

The Trip To Durrow

Tripping Up The Stairs

250 To Vigo

Village Of Cong

Waiting for Jody

Willafjord

The Wind That Shakes The Barley

The Wise Maid

Yetts of Muchart

Polkas

The Ballydesmond No. 1

The Ballydesmond No. 2

The Ballydesmond No. 3

Bill Sullivan's

The Britches Full Of Stitches

Charlie Harris' Polka

The Finnish

The Fourty Two Pound Cheque

Jessica's Polka

John Ryan's

The Little Diamond

Morrison's Bush

The Murroe

The Rambling Sailor

The Seven Step Polka

Tom's Blue Boat

Hornpipes

An Londubh
The Blackbird

Beeswing Hornpipe (A)

Beeswing Hornpipe Bb

The Belfast Hornpipe
Sweep's Hornpipe

Boys of Blue Hill

The Derry Hornpipe

Fisher's Hornpipe

The Galway

Caisleán An Óir

Hey Jude

The Home Ruler

The Humours Of Tullycrine

The Hut On Staffin Island

Kitty's Wedding

Murphy's Hornpipe

Off To California

The Plains Of Boyle

Poll Ha'Penny

Rights of Man

Barndances

Da Boannie Polka

Great Uncle Henry

If We Hadn't Any Women In The World

If We Hadn't Any Women In The World

Kitty Sean Cunningham's

L'Air Mignonne

The Seven Step

Small Feet

Waltz

Bell Table

Crested Hens

Les Poules Huppees

The Dark Island

Duke of Kent's Waltz

Josefin's

Margaret McKenzie's Farewell

Midnight On The Water

Sourgrass And Granite

The Parting

Musical notation for 'The Parting' in 3/4 time, key of D major. The melody consists of a series of eighth and quarter notes: D4, E4, F#4, G4, A4, B4, A4, G4, F#4, E4, D4. A repeat sign is placed after the first two notes.

March

Bonnie Ann

Violin

Musical notation for 'Bonnie Ann' in 2/4 time, key of D major. The melody features a mix of eighth and sixteenth notes. Chords A and A are indicated above the first and second measures respectively.

Brian Boru's March (3-part)

Musical notation for 'Brian Boru's March (3-part)' in 4/4 time, key of D major. The melody is a simple sequence of quarter notes: D4, E4, F#4, G4, A4, B4, A4, G4, F#4, E4, D4. A chord Am is indicated above the first measure.

Cape Breton Set

The Glencoe March

Musical notation for 'The Glencoe March' in 4/4 time, key of D major. The melody consists of quarter notes: D4, E4, F#4, G4, A4, B4, A4, G4, F#4, E4, D4. A 'V' (violin) marking is above the first measure.

Cathcart

Musical notation for 'Cathcart' in 3/4 time, key of D major. The melody consists of quarter notes: D4, E4, F#4, G4, A4, B4, A4, G4, F#4, E4, D4. Chords V and A are indicated above the first and second measures respectively.

O'Neill's March

Musical notation for 'O'Neill's March' in 2/4 time, key of D major. The melody is a sequence of eighth and sixteenth notes. Chords A, B, and C are indicated above the first, second, and third measures respectively. The chord sequence is: Em D, Em D 4 times, Em D, Em D, Am, G.