

1. The Lark in the Morning

Musical score for 'The Lark in the Morning' in G major and 6/8 time. It consists of four staves of music. The first staff begins with a repeat sign. The melody is characterized by eighth-note patterns and includes trills in the final measures of the second and third staves.

2. Donnybrook Fair The Joy of My Life

Musical score for 'Donnybrook Fair' in G major and 6/8 time. It consists of three staves of music. The melody features a mix of eighth and sixteenth notes, with trills in the final measures of the second and third staves.

3. The Cliffs of Moher

Musical score for 'The Cliffs of Moher' in G major and 6/8 time. It consists of three staves of music. The first staff includes two measures marked with a '4' below the notes, indicating a four-measure rest. The melody is primarily composed of eighth notes and includes trills in the final measures of the second and third staves.

4. The Blarney Pilgrim

Musical score for "The Blarney Pilgrim" in 6/8 time, key of D major. The score consists of three staves. The first staff is the melody, featuring a dotted quarter note followed by an eighth note, and a quarter note with a fermata. The second and third staves provide accompaniment with eighth and sixteenth notes.

5. Scatter the Mud

The Maid of Tramore

Musical score for "Scatter the Mud" in 6/8 time, key of D major. The score consists of two staves. The first staff is the melody, characterized by a continuous eighth-note pattern. The second staff provides accompaniment with eighth and sixteenth notes.

6. Tripping Up the Stairs

Musical score for "Tripping Up the Stairs" in 6/8 time, key of D major. The score consists of two staves. The first staff is the melody, featuring a rhythmic pattern of eighth notes and quarter notes. The second staff provides accompaniment with eighth and sixteenth notes.

7. The Kesh Jig

Kerrigan's Jig

Musical score for "The Kesh Jig" in 6/8 time, key of D major. The score consists of two staves. The first staff is the melody, featuring a dotted quarter note followed by an eighth note, and a quarter note with a fermata. The second staff provides accompaniment with eighth and sixteenth notes.

8. Saddle the Pony
The Priests Leap

Musical notation for 'Saddle the Pony' in G major, 6/8 time. The piece consists of two staves. The first staff contains the melody, and the second staff contains the accompaniment. The melody is characterized by a mix of eighth and sixteenth notes, with a final double bar line and repeat sign.

9. Whelan's Fancy

Musical notation for 'Whelan's Fancy' in G major, 6/8 time. The piece consists of two staves. The first staff contains the melody, which includes several notes with accents (~). The second staff contains the accompaniment. The melody concludes with a double bar line and repeat sign.

10. Morrison's

Musical notation for 'Morrison's' in G major, 6/8 time. The piece consists of three staves. The first staff contains the melody with accents (~) on several notes. The second and third staves contain the accompaniment. The melody ends with a double bar line and repeat sign.

11. The Connaughtman's Rambles

Musical notation for 'The Connaughtman's Rambles' in G major, 6/8 time. The piece consists of two staves. The first staff contains the melody, and the second staff contains the accompaniment. The melody concludes with a double bar line and repeat sign.

12. The Clare Jig
The Mug of Brown Ale

Musical notation for 'The Clare Jig' in G major, 6/8 time. The piece consists of three staves of music. The first staff begins with a treble clef, a key signature of one sharp (F#), and a 6/8 time signature. The melody is written in a single line. The second and third staves continue the melody, with some notes marked with a tilde (~) indicating a grace note or a specific articulation. The piece concludes with a double bar line and repeat dots.

13. Garrett Barry's

Musical notation for 'Garrett Barry's' in G major, 6/8 time. The piece consists of two staves of music. The first staff begins with a treble clef, a key signature of one sharp (F#), and a 6/8 time signature. The melody is written in a single line. The second staff continues the melody, with some notes marked with a tilde (~) indicating a grace note or a specific articulation. The piece concludes with a double bar line and repeat dots.

14. The Gold Ring

Musical score for "The Gold Ring" in G major, 6/8 time. The score consists of seven staves of music. The first staff begins with a treble clef, a key signature of one sharp (F#), and a 6/8 time signature. The melody is characterized by eighth-note patterns and includes several measures with a fermata. The second staff continues the melody with similar eighth-note patterns and fermatas. The third staff features a more complex rhythmic pattern with sixteenth notes and a four-measure rest marked with a '4'. The fourth staff returns to eighth-note patterns with fermatas. The fifth staff continues the eighth-note melody. The sixth staff features a series of dotted half notes with fermatas. The seventh staff concludes the piece with eighth-note patterns and a four-measure rest marked with a '4'.

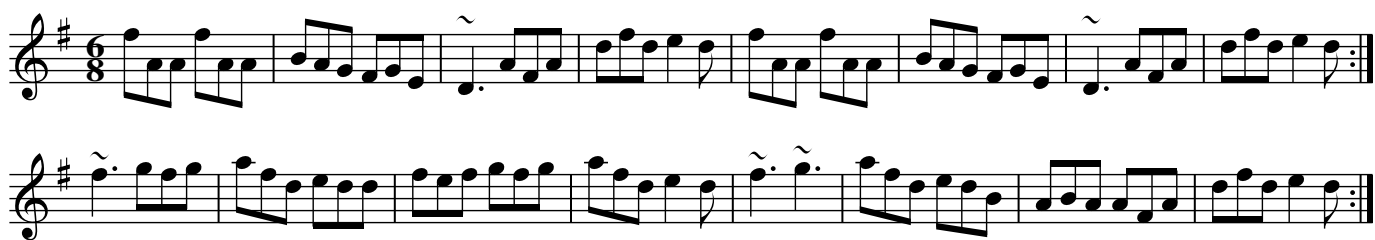
15. Fainne Oir Ort
The Gold Ring

Musical score for "Fainne Oir Ort" in G major, 6/8 time. The score consists of four staves of music. The first staff begins with a treble clef, a key signature of one sharp (F#), and a 6/8 time signature. The melody is characterized by eighth-note patterns and includes several measures with a fermata. The second staff continues the melody with similar eighth-note patterns and fermatas. The third staff features a more complex rhythmic pattern with sixteenth notes and a four-measure rest marked with a '4'. The fourth staff returns to eighth-note patterns with fermatas.

16. The Top of the Cork Road
Father O'Flynn



17. Sixpenny Money



18. The Old Hag in the Kiln
Dinny Delaney's



19. The Dingle Regatta

Musical score for 'The Dingle Regatta' in G major and 12/8 time. The score consists of three staves. The first staff contains the main melody with a key signature of one sharp (F#) and a 12/8 time signature. The second and third staves provide accompaniment. The piece concludes with a double bar line and repeat dots.

20. Kathleen Hehir's Slide

Musical score for 'Kathleen Hehir's Slide' in G major and 12/8 time. The score consists of four staves. The first staff contains the main melody with a key signature of one sharp (F#) and a 12/8 time signature. The second, third, and fourth staves provide accompaniment. The piece concludes with a double bar line and repeat dots.

21. Denis Murphy's Slide

Musical score for 'Denis Murphy's Slide' in G major and 12/8 time. The score consists of three staves. The first staff contains the main melody with a key signature of one sharp (F#) and a 12/8 time signature. The second and third staves provide accompaniment. The piece concludes with a double bar line and repeat dots.

22. Merrily Kiss the Quaker's Wife
Merrily Dance the Quaker

Musical notation for 'Merrily Kiss the Quaker's Wife' in G major, 2/4 time. The piece consists of three staves. The first staff is the melody, featuring a mix of eighth and sixteenth notes with a fermata over the final measure. The second staff is a rhythmic accompaniment of eighth notes. The third staff is a more complex accompaniment with sixteenth-note runs and fermatas.

23. The Foxhunter's Jig

Musical notation for 'The Foxhunter's Jig' in G major, 3/8 time. The piece consists of four staves. The first staff is the melody, characterized by a steady eighth-note pattern. The second staff is a rhythmic accompaniment of eighth notes. The third and fourth staves are more complex accompaniments with sixteenth-note runs and fermatas.

24. The Butterfly

John Potts

Musical notation for 'The Butterfly' in G major, 3/8 time. The piece consists of three staves. The first staff is the melody, featuring a mix of eighth and sixteenth notes. The second and third staves are accompaniments with sixteenth-note runs and fermatas.

25. The Kid on the Mountain

Musical score for "The Kid on the Mountain" in G major, 3/8 time. The score consists of five staves. The first staff begins with a treble clef, a key signature of one sharp (F#), and a 3/8 time signature. It features a melody with several notes marked with a tilde (~) above them. The second staff continues the melody with eighth and sixteenth notes. The third and fourth staves feature a more active melodic line with many sixteenth notes. The fifth staff concludes the piece with a final cadence.

26. The Maid Behind the Bar
The Green Mountain

Musical score for "The Maid Behind the Bar" in G major, 2/4 time. The score consists of four staves. The first staff begins with a treble clef, a key signature of one sharp (F#), and a 2/4 time signature. The melody is composed of eighth and sixteenth notes. The second and third staves continue the melodic line with similar rhythmic patterns. The fourth staff concludes the piece with a final cadence.

27. Miss McLeod's
Mrs. MacLeod of Raasay

Musical score for 'Miss McLeod's' in G major, 2/4 time. The score consists of four staves. The first staff begins with a repeat sign. The melody is characterized by eighth-note patterns. The second staff features a fermata over a dotted quarter note. The third and fourth staves continue the melodic line with similar rhythmic patterns.

28. The Merry Blacksmith

Musical score for 'The Merry Blacksmith' in G major, 2/4 time. The score consists of four staves. The melody is characterized by eighth-note patterns. The second staff features a fermata over a dotted quarter note. The third and fourth staves continue the melodic line with similar rhythmic patterns.

29. The Star of Munster

Musical score for 'The Star of Munster' in G major, 2/4 time. The score consists of four staves. The first staff begins with a treble clef, a key signature of one sharp (F#), and a common time signature (C). The melody is written in a single line. The second staff continues the melody. The third staff features a repeat sign at the beginning and includes a fermata over a note. The fourth staff contains a triplet of eighth notes, indicated by a '3' below the first note, and ends with a double bar line.

30. Drowsy Maggie

Musical score for 'Drowsy Maggie' in G major, 2/4 time. The score consists of four staves. The first staff begins with a treble clef, a key signature of one sharp (F#), and a common time signature (C). The melody is written in a single line and includes several fermatas. The second staff continues the melody with more fermatas. The third and fourth staves provide a bass line accompaniment for the melody, featuring a steady eighth-note pattern.

31. Saint Anne's Reel



Musical score for Saint Anne's Reel, consisting of four staves of music in treble clef, key of D major (two sharps), and common time. The first staff begins with a treble clef, a key signature of two sharps, and a common time signature. The music is written in a single melodic line. The second staff continues the melody. The third and fourth staves contain more of the melody, with some notes marked with a tilde (~) indicating a grace note or a specific articulation. The piece concludes with a double bar line and repeat dots.

32. The Silver Spear



Musical score for The Silver Spear, consisting of three staves of music in treble clef, key of D major (two sharps), and common time. The first staff begins with a treble clef, a key signature of two sharps, and a common time signature. The music is written in a single melodic line. The second and third staves continue the melody. The piece concludes with a double bar line and repeat dots.

33. Cooley's



Musical score for Cooley's, consisting of four staves of music in treble clef, key of D major (two sharps), and common time. The first staff begins with a treble clef, a key signature of two sharps, and a common time signature. The music is written in a single melodic line. The second and third staves continue the melody, with some notes marked with a tilde (~) indicating a grace note or a specific articulation. The fourth staff concludes the piece with a double bar line and repeat dots.

34. The Pigeon on the Gate

Musical score for "The Pigeon on the Gate" in G major, 2/4 time. The score consists of four staves. The first staff contains the melody with accents and a triplet. The second staff continues the melody with accents. The third and fourth staves provide a harmonic accompaniment with triplets.

35. Swinging on the Gate

Musical score for "Swinging on the Gate" in G major, 2/4 time. The score consists of four staves. The first staff contains the melody. The second and fourth staves feature triplets in the accompaniment. The third staff continues the melody with accents.

36. The Galway Rambler

Walsh's Favorite

Wellington's

Musical score for 'The Galway Rambler' in G major (one sharp) and 6/8 time. The score consists of five staves of music. The first staff begins with a treble clef, a key signature of one sharp (F#), and a common time signature (C). The melody is written in a single line. The second staff continues the melody. The third staff features a series of eighth-note patterns. The fourth staff continues the eighth-note patterns. The fifth staff concludes the piece with a triplet of eighth notes and a final cadence.

37. The Sally Gardens

Musical score for 'The Sally Gardens' in G major (one sharp) and 6/8 time. The score consists of four staves of music. The first staff begins with a treble clef, a key signature of one sharp (F#), and a common time signature (C). The melody is written in a single line. The second staff continues the melody and includes a triplet of eighth notes. The third staff continues the melody and includes a triplet of eighth notes. The fourth staff concludes the piece with a triplet of eighth notes and a final cadence.

38. Ships Are Sailing

Musical score for 'Ships Are Sailing' in G major, 2/4 time. The score consists of four staves. The first staff contains the melody with two triplet markings (3) and a fermata. The second staff contains a rhythmic accompaniment with triplet markings (3) and a fermata. The third and fourth staves contain further accompaniment parts.

39. Sheehan's Wellington's

Musical score for 'Sheehan's Wellington's' in G major, 2/4 time. The score consists of four staves. The first staff contains the melody with two fermatas. The second staff contains a rhythmic accompaniment with a fermata. The third and fourth staves contain further accompaniment parts, including a triplet marking (3) in the final measure of the fourth staff.

40. The Shaskeen

Musical score for "The Shaskeen" in G major, 6/8 time. The score consists of five staves of music. The first staff contains the main melody with several trills. The second and third staves provide a steady accompaniment. The fourth and fifth staves continue the accompaniment and include some trills. The piece concludes with a double bar line and a repeat sign.

41. The Wise Maid

Doherty's

Johnny Doherty

Musical score for "The Wise Maid Doherty's" in G major, 6/8 time. The score consists of four staves of music. The first staff begins with a trill and includes a triplet of eighth notes. The second staff continues the melody with another triplet. The third and fourth staves provide accompaniment, with the fourth staff featuring a triplet of eighth notes. The piece concludes with a double bar line and a repeat sign.

42. The Bank of Ireland

Musical score for 'The Bank of Ireland' in G major, 2/4 time. The score consists of four staves. The first staff contains the main melody. The second staff features a rhythmic accompaniment with eighth-note patterns. The third and fourth staves contain more melodic lines, with the fourth staff including triplet markings (indicated by the number '3') and a fermata over the final note.

43. The Sligo Maid

Musical score for 'The Sligo Maid' in G major, 2/4 time. The score consists of four staves. The first staff contains the main melody with a triplet marking (indicated by the number '3') and a fermata. The second staff features a rhythmic accompaniment with eighth-note patterns and a triplet marking. The third and fourth staves contain more melodic lines, with the fourth staff including a fermata over the final note.

44. Christmas Eve
Tommy Coen's

Tommy Coen

Musical score for "Christmas Eve" by Tommy Coen's. The score is written in treble clef with a key signature of one sharp (F#) and a common time signature (C). It consists of six staves of music. The first two staves contain the main melody, with various note values and rests. The third and fourth staves feature a triplet of eighth notes, indicated by a '3' below the notes. The fifth and sixth staves continue the melody, with some notes marked with a tilde (~) for grace notes. The piece concludes with a double bar line and repeat dots.

45. The Temperance Reel
The Teetotaller's Reel

Musical score for "The Temperance Reel" by The Teetotaller's Reel. The score is written in treble clef with a key signature of one sharp (F#) and a common time signature (C). It consists of four staves of music. The first two staves contain the main melody, with various note values and rests. The third and fourth staves continue the melody, with some notes marked with a tilde (~) for grace notes. The piece concludes with a double bar line and repeat dots.

46. Junior Crehan's Favorite
The Knotted Cord

Musical score for 'The Knotted Cord' in G major, 2/4 time. The score consists of four staves. The first two staves contain the main melody with a triplet of eighth notes in the second measure of each line. The third and fourth staves provide a harmonic accompaniment with a steady eighth-note pattern. The piece concludes with a double bar line and repeat dots.

47. The Earl's Chair

Musical score for 'The Earl's Chair' in G major, 2/4 time. The score consists of four staves. The first two staves contain the main melody. The third and fourth staves provide a harmonic accompaniment. A triplet of eighth notes is present in the third measure of the third staff. The piece concludes with a double bar line and repeat dots.

48. The Fermoy Lasses

Musical score for 'The Fermoy Lasses' in G major and 6/8 time. The score consists of four staves. The first staff begins with a repeat sign. The second staff ends with a repeat sign. The third and fourth staves contain triplets and other melodic lines. The key signature has one sharp (F#) and the time signature is 6/8.

49. The Rights of Man

Musical score for 'The Rights of Man' in G major and 4/4 time. The score consists of four staves. The first staff begins with a 4/4 time signature. The second and fourth staves contain triplets. The key signature has one sharp (F#) and the time signature is 4/4.

50. The Boys of Bluehill

Musical score for 'The Boys of Bluehill' in G major (one sharp) and 4/4 time. The score consists of four staves of music. The first staff begins with a treble clef, a key signature of one sharp (F#), and a 4/4 time signature. The melody is written in a simple, folk-like style. The second and fourth staves contain triplets of eighth notes, indicated by a '3' below the notes. The piece concludes with a double bar line and repeat dots.

51. Harvest Home

Musical score for 'Harvest Home' in G major (one sharp) and 4/4 time. The score consists of four staves of music. The first staff begins with a treble clef, a key signature of one sharp (F#), and a 4/4 time signature. The melody is written in a simple, folk-like style. The second and fourth staves contain triplets of eighth notes, indicated by a '3' below the notes. The third staff features a fermata over a note, indicated by a tilde (~) above the note. The piece concludes with a double bar line and repeat dots.

52. Off to California

Musical score for "Off to California" in G major (one sharp) and 4/4 time. The score consists of four staves of music. The first staff begins with a treble clef, a key signature of one sharp (F#), and a 4/4 time signature. The melody features several triplet markings (indicated by a '3' above the notes) and concludes with a double bar line and repeat dots. The second staff continues the melody with more triplet markings. The third staff shows a change in the melodic line, still featuring triplet markings. The fourth staff concludes the piece with a final triplet and a double bar line with repeat dots.

53. Kitty's Wedding

Musical score for "Kitty's Wedding" in G major (one sharp) and 4/4 time. The score consists of four staves of music. The first staff begins with a treble clef, a key signature of one sharp (F#), and a 4/4 time signature. The melody is composed of eighth and quarter notes. The second staff continues the melody. The third staff shows a change in the melodic line. The fourth staff concludes the piece with a double bar line and repeat dots.

54. The Home Ruler

Musical score for 'The Home Ruler' in G major and 4/4 time. The score consists of four staves. The first staff begins with a treble clef, a key signature of one sharp (F#), and a 4/4 time signature. The melody is written in a single line. The second staff continues the melody. The third staff features a triplet of eighth notes marked with a '3' above the notes. The fourth staff concludes the piece with a double bar line and repeat dots, also featuring a triplet of eighth notes marked with a '3' above the notes.

55. The Plains of Boyle

Musical score for 'The Plains of Boyle' in G major and 4/4 time. The score consists of four staves. The first staff begins with a treble clef, a key signature of one sharp (F#), and a 4/4 time signature. The melody is written in a single line. The second staff contains a triplet of eighth notes marked with a '3' above the notes. The third staff contains two triplet markings, one above and one below the notes. The fourth staff concludes the piece with a double bar line and repeat dots, also featuring a triplet of eighth notes marked with a '3' above the notes.

56. The Ballydesmond Polka #1

Musical score for 'The Ballydesmond Polka #1' in G major (one sharp) and 2/4 time. The score consists of four staves of music. The first staff begins with a treble clef, a key signature of one sharp (F#), and a 2/4 time signature. The melody is characterized by eighth and sixteenth notes, with a prominent triplet of eighth notes in the fourth measure. The piece concludes with a double bar line and repeat dots.

57. The Ballydesmond Polka #2
Maurice Manley's

Musical score for 'The Ballydesmond Polka #2' in G major (one sharp) and 2/4 time. The score consists of two staves of music. The first staff begins with a treble clef, a key signature of one sharp (F#), and a 2/4 time signature. The melody features a mix of eighth and sixteenth notes, with a triplet of eighth notes in the fourth measure. The piece concludes with a double bar line and repeat dots.

58. The Ballydesmond Polka #3
Tom Billy's

Musical score for 'The Ballydesmond Polka #3' in G major (one sharp) and 2/4 time. The score consists of two staves of music. The first staff begins with a treble clef, a key signature of one sharp (F#), and a 2/4 time signature. The melody includes eighth and sixteenth notes, with a triplet of eighth notes in the fourth measure. The piece concludes with a double bar line and repeat dots.

59. Spanish Lady

Musical notation for 'Spanish Lady' in G major, 2/4 time. The piece consists of two staves. The first staff contains the melody, starting with a repeat sign and a first ending. The second staff contains the accompaniment, featuring a rhythmic pattern of eighth and sixteenth notes.

60. Charlie Harris' Polka

Musical notation for 'Charlie Harris' Polka' in G major, 2/4 time. The piece consists of two staves. The first staff contains the melody. The second staff contains the accompaniment, which includes two first endings labeled '1' and '2'.

61. Maggie in the Woods

Musical notation for 'Maggie in the Woods' in G major, 2/4 time. The piece consists of two staves. The first staff contains the melody. The second staff contains the accompaniment, featuring a rhythmic pattern of eighth and sixteenth notes.

62. Denis Murphy's Polka

Musical notation for 'Denis Murphy's Polka' in G major, 2/4 time. The piece consists of two staves. The first staff contains the melody. The second staff contains the accompaniment, featuring a rhythmic pattern of eighth and sixteenth notes.

Index

The Ballydesmond Polka #1	24
The Ballydesmond Polka #2	24
The Ballydesmond Polka #3	24
The Bank of Ireland	17
The Blarney Pilgrim	2
The Boys of Bluehill	21
The Butterfly	8
Charlie Harris' Polka	25
Christmas Eve	18
The Clare Jig	4
The Cliffs of Moher	1
The Connaughtman's Rambles	3
Cooley's	12
Denis Murphy's Polka	25
Denis Murphy's Slide	7
The Dingle Regatta	7
Dinny Delaney's	6
Doherty's	16
Donnybrook Fair	1
Drowsy Maggie	11
The Earl's Chair	19
Fainne Oir Ort	5
Father O'Flynn	6
The Fermoy Lasses	20
The Foxhunter's Jig	8
The Galway Rambler	14
Garrett Barry's	4
The Gold Ring	5
The Gold Ring	5
The Green Mountain	9
Harvest Home	21
The Home Ruler	23
The Joy of My Life	1
Junior Crehan's Favorite	19
Kathleen Hehir's Slide	7
Kerrigan's Jig	2
The Kesh Jig	2
The Kid on the Mountain	9
Kitty's Wedding	22
The Knotted Cord	19

The Lark in the Morning	1
Maggie in the Woods	25
The Maid Behind the Bar	9
The Maid of Tramore	2
Maurice Manley's	24
Merrily Dance the Quaker	8
Merrily Kiss the Quaker's Wife	8
The Merry Blacksmith	10
Miss McLeod's	10
Morrison's	3
Mrs. MacLeod of Raasay	10
The Mug of Brown Ale	4
Off to California	22
The Old Hag in the Kiln	6
The Pigeon on the Gate	13
The Plains of Boyle	23
The Priests Leap	3
The Rights of Man	20
Saddle the Pony	3
Saint Anne's Reel	12
The Sally Gardens	14
Scatter the Mud	2
The Shaskeen	16
Sheehan's	15
Ships Are Sailing	15
The Silver Spear	12
Sixpenny Money	6
The Sligo Maid	17
Spanish Lady	25
The Star of Munster	11
Swinging on the Gate	13
The Teetotaller's Reel	18
The Temperance Reel	18
Tom Billy's	24
Tommy Coen's	18
The Top of the Cork Road	6
Tripping Up the Stairs	2
Walsh's Favorite	14
Wellington's	14
Wellington's	15
Whelan's Fancy	3
The Wise Maid	16