

### 1. The Lark in the Morning

Musical score for 'The Lark in the Morning' in G major and 6/8 time. It consists of four staves of music. The first staff begins with a repeat sign. The melody is characterized by eighth-note patterns and includes trills in the final measures of the second and third staves.

### 2. Donnybrook Fair The Joy of My Life

Musical score for 'Donnybrook Fair' in G major and 6/8 time. It consists of three staves of music. The melody features a mix of eighth and sixteenth notes, with trills in the final measures of the second and third staves.

### 3. The Cliffs of Moher

Musical score for 'The Cliffs of Moher' in G major and 6/8 time. It consists of three staves of music. The first staff includes two measures with a '4' below them, indicating a four-measure rest. The melody is primarily composed of eighth notes and includes trills in the final measures of the second and third staves.

## 4. The Blarney Pilgrim

Musical score for 'The Blarney Pilgrim' in 6/8 time, key of D major. The score consists of three staves. The first staff is the melody, featuring a mix of eighth and sixteenth notes with some grace notes. The second and third staves provide accompaniment with eighth-note patterns. The piece concludes with a double bar line and repeat dots.

## 5. Scatter the Mud

The Maid of Tramore

Musical score for 'Scatter the Mud' in 6/8 time, key of D major. The score consists of two staves. The first staff is the melody, characterized by a steady eighth-note accompaniment. The second staff provides a more active accompaniment with eighth-note patterns. The piece concludes with a double bar line and repeat dots.

## 6. Tripping Up the Stairs

Musical score for 'Tripping Up the Stairs' in 6/8 time, key of D major. The score consists of two staves. The first staff is the melody, featuring a mix of eighth and sixteenth notes. The second staff provides accompaniment with eighth-note patterns. The piece concludes with a double bar line and repeat dots.

## 7. The Kesh Jig

Kerrigan's Jig

Musical score for 'The Kesh Jig' in 6/8 time, key of D major. The score consists of two staves. The first staff is the melody, featuring a mix of eighth and sixteenth notes with some grace notes. The second staff provides accompaniment with eighth-note patterns. The piece concludes with a double bar line and repeat dots.

8. Saddle the Pony  
The Priests Leap

Musical notation for 'Saddle the Pony' in G major, 6/8 time. The piece consists of two staves. The first staff contains the melody, and the second staff contains the accompaniment. The melody features a mix of eighth and sixteenth notes, with a final double bar line and repeat sign.

9. Whelan's Fancy

Musical notation for 'Whelan's Fancy' in G major, 6/8 time. The piece consists of two staves. The first staff contains the melody, which includes several notes with accents (~). The second staff contains the accompaniment. The piece concludes with a double bar line and repeat sign.

10. Morrison's

Musical notation for 'Morrison's' in G major, 6/8 time. The piece consists of three staves. The first staff contains the melody with accents (~) on several notes. The second and third staves contain the accompaniment. The piece ends with a double bar line and repeat sign.

11. The Connaughtman's Rambles

Musical notation for 'The Connaughtman's Rambles' in G major, 6/8 time. The piece consists of two staves. The first staff contains the melody, and the second staff contains the accompaniment. The piece concludes with a double bar line and repeat sign.

12. The Clare Jig  
The Mug of Brown Ale

Musical notation for 'The Clare Jig' in G major, 6/8 time. The piece consists of three staves of music. The first staff begins with a treble clef, a key signature of one sharp (F#), and a 6/8 time signature. The melody is characterized by eighth-note patterns and includes a fermata over the second measure. The second and third staves continue the melody with similar rhythmic patterns and include additional fermatas. The piece concludes with a double bar line and repeat dots.

13. Garrett Barry's

Musical notation for 'Garrett Barry's' in G major, 6/8 time. The piece consists of two staves of music. The first staff begins with a treble clef, a key signature of one sharp (F#), and a 6/8 time signature. The melody features eighth-note patterns and includes a fermata over the second measure. The second staff continues the melody with similar rhythmic patterns and includes additional fermatas. The piece concludes with a double bar line and repeat dots.

## 14. The Gold Ring

Musical score for "The Gold Ring" in G major, 6/8 time. The score consists of seven staves of music. The first staff begins with a treble clef, a key signature of one sharp (F#), and a 6/8 time signature. The melody is characterized by eighth-note patterns and rests. The second staff continues the melody with some notes marked with a tilde (~). The third staff features a more complex rhythmic pattern with eighth-note runs and a four-measure rest marked with a '4'. The fourth staff continues the melody with more tilde markings. The fifth staff shows a steady eighth-note flow. The sixth staff has several notes with tilde markings. The seventh staff concludes the piece with a four-measure rest marked with a '4'.

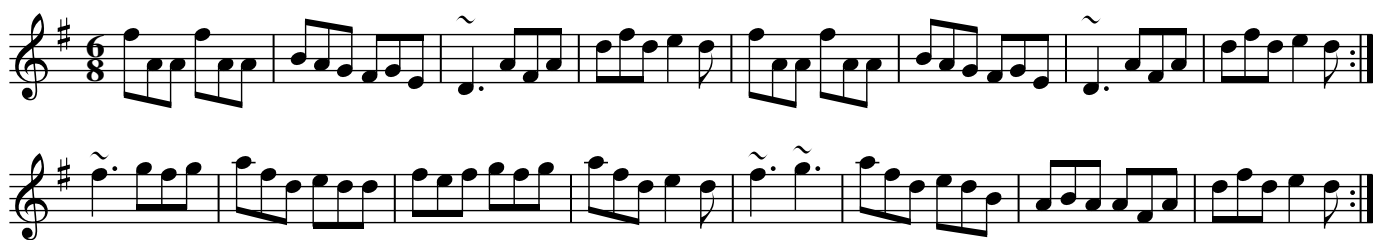
15. Fainne Oir Ort  
The Gold Ring

Musical score for "Fainne Oir Ort" in G major, 6/8 time. The score consists of four staves of music. The first staff begins with a treble clef, a key signature of one sharp (F#), and a 6/8 time signature. The melody is characterized by eighth-note patterns and rests. The second staff continues the melody with eighth-note runs. The third staff shows a steady eighth-note flow. The fourth staff concludes the piece with a steady eighth-note flow.

16. The Top of the Cork Road  
Father O'Flynn



17. Sixpenny Money



18. The Old Hag in the Kiln  
Dinny Delaney's



## 19. The Dingle Regatta

Musical score for 'The Dingle Regatta' in G major, 12/8 time. The score consists of three staves. The first staff contains the main melody with a key signature of one sharp (F#) and a 12/8 time signature. The second and third staves provide accompaniment with various rhythmic patterns and rests. The piece concludes with a double bar line and repeat dots.

## 20. Kathleen Hehir's Slide

Musical score for 'Kathleen Hehir's Slide' in G major, 12/8 time. The score consists of four staves. The first staff contains the main melody. The second and third staves provide accompaniment with rhythmic patterns. The fourth staff continues the accompaniment. The piece concludes with a double bar line and repeat dots.

## 21. Denis Murphy's Slide

Musical score for 'Denis Murphy's Slide' in G major, 12/8 time. The score consists of three staves. The first staff contains the main melody. The second and third staves provide accompaniment with rhythmic patterns. The piece concludes with a double bar line and repeat dots.

22. Merrily Kiss the Quaker's Wife  
Merrily Dance the Quaker

Musical score for 'Merrily Kiss the Quaker's Wife' in G major, 2/4 time. The score consists of three staves. The first staff contains the melody with a fermata over the eighth measure. The second staff is a harmonic accompaniment. The third staff is a more active accompaniment with slurs and accents. The piece concludes with a double bar line and repeat dots.

23. The Foxhunter's Jig

Musical score for 'The Foxhunter's Jig' in G major, 3/8 time. The score consists of four staves. The first staff is the melody. The second staff is a harmonic accompaniment. The third and fourth staves are more active accompaniments with slurs and accents. The piece concludes with a double bar line and repeat dots.

24. The Butterfly

*John Potts*

Musical score for 'The Butterfly' in G major, 3/8 time. The score consists of three staves. The first staff is the melody. The second and third staves are accompaniments. The piece concludes with a double bar line and repeat dots.



## 25. The Kid on the Mountain

Musical score for "The Kid on the Mountain" in G major, 3/8 time. The score consists of five staves of music. The first staff begins with a treble clef, a key signature of one sharp (F#), and a 3/8 time signature. It features a melody with several notes marked with a tilde (~) above them. The second staff continues the melody. The third and fourth staves feature a more active, rhythmic accompaniment with many eighth and sixteenth notes. The fifth staff concludes the piece with a final melodic phrase and a double bar line.

26. The Maid Behind the Bar  
The Green Mountain

Musical score for "The Maid Behind the Bar" in G major, 2/4 time. The score consists of four staves of music. The first staff begins with a treble clef, a key signature of one sharp (F#), and a 2/4 time signature. The melody is characterized by a steady eighth-note rhythm. The second and third staves continue the melody with various rhythmic patterns. The fourth staff concludes the piece with a final melodic phrase and a double bar line.

27. Miss McLeod's  
Mrs. MacLeod of Raasay

Musical score for 'Miss McLeod's' in G major, 2/4 time. The score consists of four staves. The first staff begins with a repeat sign. The melody is characterized by eighth-note patterns. The second staff features a fermata over a note in the second measure. The third and fourth staves continue the melody with similar rhythmic patterns.

28. The Merry Blacksmith

Musical score for 'The Merry Blacksmith' in G major, 2/4 time. The score consists of four staves. The melody is characterized by eighth-note patterns. The second staff features a fermata over a note in the second measure. The third and fourth staves continue the melody with similar rhythmic patterns.

29. The Star of Munster

Musical score for 'The Star of Munster' in G major (one sharp) and 2/4 time. The score consists of four staves. The first staff begins with a treble clef and a key signature of one sharp. The melody is written in a simple, folk-like style. The second staff continues the melody with a repeat sign at the end. The third staff features a repeat sign at the beginning and a fermata over the final note. The fourth staff contains a triplet of eighth notes, indicated by a '3' below the first note, followed by a repeat sign at the end.

30. Drowsy Maggie

Musical score for 'Drowsy Maggie' in G major (one sharp) and 2/4 time. The score consists of four staves. The first staff begins with a treble clef and a key signature of one sharp. The melody is characterized by a series of slurs over groups of notes, giving it a 'drowsy' or 'lulling' quality. The second staff continues this pattern with slurs. The third and fourth staves provide a more active accompaniment with eighth-note patterns, also featuring slurs.

## 31. Saint Anne's Reel



Musical score for Saint Anne's Reel, consisting of four staves of music in treble clef, key of D major (two sharps), and common time. The first staff begins with a treble clef, a key signature of two sharps, and a common time signature. The music is written in a single melodic line. The second staff continues the melody. The third and fourth staves contain more of the melody, with some notes marked with a tilde (~) indicating a grace note or a specific articulation. The piece concludes with a double bar line and repeat dots.

## 32. The Silver Spear



Musical score for The Silver Spear, consisting of three staves of music in treble clef, key of D major (two sharps), and common time. The first staff begins with a treble clef, a key signature of two sharps, and a common time signature. The music is written in a single melodic line. The second and third staves continue the melody. The piece concludes with a double bar line and repeat dots.

## 33. Cooley's



Musical score for Cooley's, consisting of four staves of music in treble clef, key of D major (two sharps), and common time. The first staff begins with a treble clef, a key signature of two sharps, and a common time signature. The music is written in a single melodic line. The second staff continues the melody, featuring a triplet of eighth notes marked with a '3'. The third and fourth staves continue the melody, with some notes marked with a tilde (~) indicating a grace note or a specific articulation. The piece concludes with a double bar line and repeat dots.

### 34. The Pigeon on the Gate

Musical score for 'The Pigeon on the Gate' in G major, 2/4 time. The score consists of four staves. The first staff contains the melody with accents and a triplet. The second staff continues the melody with accents. The third and fourth staves provide a harmonic accompaniment with triplets.

### 35. Swinging on the Gate

Musical score for 'Swinging on the Gate' in G major, 2/4 time. The score consists of four staves. The first staff contains the melody. The second and fourth staves feature triplets in the accompaniment. The third staff continues the melody with accents.

## 36. The Galway Rambler

Walsh's Favorite

Wellington's

Musical score for "The Galway Rambler" in G major (one sharp) and 6/8 time. The score consists of five staves of music. The first staff begins with a treble clef, a key signature of one sharp (F#), and a common time signature (C). The melody is written in a single line. The second staff continues the melody. The third staff features a series of eighth notes. The fourth staff continues the melody. The fifth staff includes a triplet of eighth notes, indicated by a '3' below the notes.

## 37. The Sally Gardens

Musical score for "The Sally Gardens" in G major (one sharp) and 6/8 time. The score consists of four staves of music. The first staff begins with a treble clef, a key signature of one sharp (F#), and a common time signature (C). The melody is written in a single line. The second staff continues the melody and includes a triplet of eighth notes, indicated by a '3' below the notes. The third staff continues the melody and includes a triplet of eighth notes, indicated by a '3' below the notes. The fourth staff continues the melody and includes a triplet of eighth notes, indicated by a '3' below the notes.

### 38. Ships Are Sailing

Musical score for 'Ships Are Sailing' in G major, 2/4 time. The score consists of four staves. The first staff contains the melody with two triplet markings (3) and a fermata. The second staff contains a rhythmic accompaniment with two triplet markings (3) and a fermata. The third and fourth staves contain further accompaniment parts.

### 39. Sheehan's Wellington's

Musical score for 'Sheehan's Wellington's' in G major, 2/4 time. The score consists of four staves. The first staff contains the melody with two fermatas. The second staff contains a rhythmic accompaniment with a fermata. The third and fourth staves contain further accompaniment parts, including a triplet marking (3) in the final measure of the fourth staff.

## 40. The Shaskeen

Musical score for "The Shaskeen" in G major, 6/8 time. The score consists of five staves of music. The first staff features a melodic line with several grace notes (breves) over the first few notes. The second and third staves show a steady eighth-note accompaniment. The fourth staff continues the accompaniment with a slight change in rhythm. The fifth staff concludes the piece with a final melodic phrase and a grace note.

## 41. The Wise Maid

Doherty's

*Johnny Doherty*

Musical score for "The Wise Maid Doherty's" in G major, 6/8 time. The score consists of four staves of music. The first staff begins with a grace note and includes a triplet of eighth notes. The second staff continues the melody with another triplet. The third and fourth staves provide a consistent eighth-note accompaniment, with the fourth staff ending with a triplet and a final grace note.



## 42. The Bank of Ireland

Musical score for "The Bank of Ireland" in G major (one sharp) and 2/4 time. The score consists of four staves. The first staff contains the main melody. The second staff features a more rhythmic accompaniment with eighth notes. The third and fourth staves contain a more complex accompaniment with triplets and slurs. The piece concludes with a double bar line and a key signature change to G major.

## 43. The Sligo Maid

Musical score for "The Sligo Maid" in G major (one sharp) and 2/4 time. The score consists of four staves. The first staff contains the main melody with a triplet and a slur. The second staff features a more rhythmic accompaniment with a triplet. The third and fourth staves contain a more complex accompaniment with slurs and a final flourish. The piece concludes with a double bar line and a key signature change to G major.

44. Christmas Eve  
Tommy Coen's

*Tommy Coen*

Musical score for "Christmas Eve" by Tommy Coen's. The score is written in treble clef with a key signature of one sharp (F#) and a common time signature (C). It consists of six staves of music. The first two staves contain the main melody, with various note values and rests. The third and fourth staves feature a triplet of eighth notes, indicated by a '3' below the notes. The fifth and sixth staves continue the melody with various note values and rests, including some notes with accents.

45. The Temperance Reel  
The Teetotaller's Reel

Musical score for "The Temperance Reel" by The Teetotaller's Reel. The score is written in treble clef with a key signature of one sharp (F#) and a common time signature (C). It consists of four staves of music. The first two staves contain the main melody, with various note values and rests. The third and fourth staves continue the melody with various note values and rests, including some notes with accents.

### 46. Junior Crehan's Favorite The Knotted Cord

Musical score for 'The Knotted Cord' in G major, 2/4 time. The score consists of four staves. The first two staves contain the main melody with trills and triplets. The last two staves provide a harmonic accompaniment with a steady eighth-note pattern. The piece concludes with a double bar line.

### 47. The Earl's Chair

Musical score for 'The Earl's Chair' in G major, 2/4 time. The score consists of four staves. The first two staves contain the main melody with trills and eighth-note patterns. The last two staves provide a harmonic accompaniment with a steady eighth-note pattern. The piece concludes with a double bar line.

## 48. The Fermoy Lasses

Musical score for "The Fermoy Lasses" in G major (one sharp) and 6/8 time. The score consists of four staves. The first staff begins with a repeat sign. The second staff ends with a repeat sign. The third and fourth staves contain triplets, indicated by a '3' above the notes.

## 49. The Rights of Man

Musical score for "The Rights of Man" in G major (one sharp) and 4/4 time. The score consists of four staves. The first staff begins with a 4/4 time signature. The second and fourth staves contain triplets, indicated by a '3' below the notes. The second staff ends with a repeat sign.

### 50. The Boys of Bluehill

Musical score for 'The Boys of Bluehill' in G major (one sharp) and 4/4 time. The score consists of four staves of music. The first staff begins with a treble clef, a key signature of one sharp (F#), and a 4/4 time signature. The melody is written in a single line. The second staff continues the melody and includes a triplet of eighth notes marked with a '3' below them. The third staff continues the melody. The fourth staff concludes the piece with a double bar line and repeat dots. There are additional triplet markings in the second and fourth staves.

### 51. Harvest Home

Musical score for 'Harvest Home' in G major (one sharp) and 4/4 time. The score consists of four staves of music. The first staff begins with a treble clef, a key signature of one sharp (F#), and a 4/4 time signature. The melody is written in a single line. The second staff includes several triplet markings, each with a '3' below the notes. The third staff includes two fermatas (~) over notes. The fourth staff concludes the piece with a double bar line and repeat dots. There are additional triplet markings in the second and fourth staves.

## 52. Off to California

Musical score for "Off to California" in G major, 4/4 time. The score consists of four staves of music. The first staff begins with a treble clef, a key signature of one sharp (F#), and a 4/4 time signature. The melody starts with a triplet of eighth notes (G4, A4, B4) followed by a series of eighth and quarter notes. The second staff continues the melody with more triplet markings. The third staff features a series of eighth notes. The fourth staff concludes the piece with a final triplet and a double bar line.

## 53. Kitty's Wedding

Musical score for "Kitty's Wedding" in G major, 4/4 time. The score consists of four staves of music. The first staff begins with a treble clef, a key signature of one sharp (F#), and a 4/4 time signature. The melody starts with a quarter note (G4) followed by eighth and quarter notes. The second staff continues the melody with eighth and quarter notes. The third staff features a series of eighth notes. The fourth staff concludes the piece with a final quarter note and a double bar line.

54. The Home Ruler

Musical score for 'The Home Ruler' in G major (one sharp) and 4/4 time. The score consists of four staves of music. The first staff begins with a treble clef, a key signature of one sharp (F#), and a 4/4 time signature. The melody is written in a single line. The second staff continues the melody. The third staff features a triplet of eighth notes marked with a '3' above the notes. The fourth staff concludes the piece with a double bar line and repeat dots. The key signature and time signature are consistent throughout.

55. The Plains of Boyle

Musical score for 'The Plains of Boyle' in G major (one sharp) and 4/4 time. The score consists of four staves of music. The first staff begins with a treble clef, a key signature of one sharp (F#), and a 4/4 time signature. The melody is written in a single line. The second staff continues the melody. The third staff features a triplet of eighth notes marked with a '3' above the notes. The fourth staff concludes the piece with a double bar line and repeat dots. The key signature and time signature are consistent throughout.

## 56. The Ballydesmond Polka #1

Musical score for 'The Ballydesmond Polka #1' in G major (one sharp) and 2/4 time. The score consists of four staves of music. The first staff contains the main melody, starting with a treble clef and a key signature of one sharp. The second and third staves provide a harmonic accompaniment, and the fourth staff continues the accompaniment with more complex rhythmic patterns. The piece concludes with a double bar line and repeat dots.

57. The Ballydesmond Polka #2  
Maurice Manley's

Musical score for 'The Ballydesmond Polka #2' in G major (one sharp) and 2/4 time. The score consists of two staves of music. The first staff contains the main melody, and the second staff provides a harmonic accompaniment. The piece concludes with a double bar line and repeat dots.

58. The Ballydesmond Polka #3  
Tom Billy's

Musical score for 'The Ballydesmond Polka #3' in G major (one sharp) and 2/4 time. The score consists of two staves of music. The first staff contains the main melody, and the second staff provides a harmonic accompaniment. The piece concludes with a double bar line and repeat dots.



59. Spanish Lady

Musical notation for 'Spanish Lady' in G major, 2/4 time. The piece consists of two staves. The first staff contains the melody, starting with a repeat sign and a first ending. The second staff contains the accompaniment, featuring a rhythmic pattern of eighth and sixteenth notes.

60. Charlie Harris' Polka

Musical notation for 'Charlie Harris' Polka' in G major, 2/4 time. The piece consists of two staves. The first staff contains the melody. The second staff contains the accompaniment, which includes two first endings labeled '1' and '2'.

61. Maggie in the Woods

Musical notation for 'Maggie in the Woods' in G major, 2/4 time. The piece consists of two staves. The first staff contains the melody. The second staff contains the accompaniment, featuring a rhythmic pattern of eighth and sixteenth notes.

62. Denis Murphy's Polka

Musical notation for 'Denis Murphy's Polka' in G major, 2/4 time. The piece consists of two staves. The first staff contains the melody. The second staff contains the accompaniment, featuring a rhythmic pattern of eighth and sixteenth notes.

## Index

The Ballydesmond Polka #1	24
The Ballydesmond Polka #2	24
The Ballydesmond Polka #3	24
The Bank of Ireland	17
The Blarney Pilgrim	2
The Boys of Bluehill	21
The Butterfly	8
Charlie Harris' Polka	25
Christmas Eve	18
The Clare Jig	4
The Cliffs of Moher	1
The Connaughtman's Rambles	3
Cooley's	12
Denis Murphy's Polka	25
Denis Murphy's Slide	7
The Dingle Regatta	7
Dinny Delaney's	6
Doherty's	16
Donnybrook Fair	1
Drowsy Maggie	11
The Earl's Chair	19
Fainne Oir Ort	5
Father O'Flynn	6
The Fermoy Lasses	20
The Foxhunter's Jig	8
The Galway Rambler	14
Garrett Barry's	4
The Gold Ring	5
The Gold Ring	5
The Green Mountain	9
Harvest Home	21
The Home Ruler	23
The Joy of My Life	1
Junior Crehan's Favorite	19
Kathleen Hehir's Slide	7
Kerrigan's Jig	2
The Kesh Jig	2
The Kid on the Mountain	9
Kitty's Wedding	22
The Knotted Cord	19

The Lark in the Morning . . . . .	1
Maggie in the Woods . . . . .	25
The Maid Behind the Bar . . . . .	9
The Maid of Tramore . . . . .	2
Maurice Manley's . . . . .	24
Merrily Dance the Quaker . . . . .	8
Merrily Kiss the Quaker's Wife . . . . .	8
The Merry Blacksmith . . . . .	10
Miss McLeod's . . . . .	10
Morrison's . . . . .	3
Mrs. MacLeod of Raasay . . . . .	10
The Mug of Brown Ale . . . . .	4
Off to California . . . . .	22
The Old Hag in the Kiln . . . . .	6
The Pigeon on the Gate . . . . .	13
The Plains of Boyle . . . . .	23
The Priests Leap . . . . .	3
The Rights of Man . . . . .	20
Saddle the Pony . . . . .	3
Saint Anne's Reel . . . . .	12
The Sally Gardens . . . . .	14
Scatter the Mud . . . . .	2
The Shaskeen . . . . .	16
Sheehan's . . . . .	15
Ships Are Sailing . . . . .	15
The Silver Spear . . . . .	12
Sixpenny Money . . . . .	6
The Sligo Maid . . . . .	17
Spanish Lady . . . . .	25
The Star of Munster . . . . .	11
Swinging on the Gate . . . . .	13
The Teetotaller's Reel . . . . .	18
The Temperance Reel . . . . .	18
Tom Billy's . . . . .	24
Tommy Coen's . . . . .	18
The Top of the Cork Road . . . . .	6
Tripping Up the Stairs . . . . .	2
Walsh's Favorite . . . . .	14
Wellington's . . . . .	14
Wellington's . . . . .	15
Whelan's Fancy . . . . .	3
The Wise Maid . . . . .	16